



working together

Lewisham All-Age Autism Strategy 2022-2027

What do you think?



**easy
read**

Contents

Page

Introduction

3

About you

5

Questions for autistic people and their carers

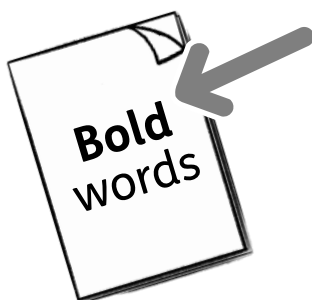
6

Our priorities

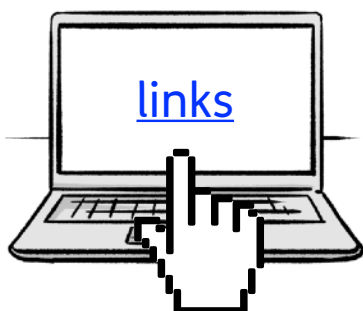
10

More about you

26



In this Easy Read document, difficult words are in **bold**. We explain what these words mean in the sentence after they have been used.



Some words are [blue and underlined](#). These are links which will go to another website which has more information.

Introduction



South London CCG and Lewisham Borough Council have been thinking about how to improve life for **autistic** people.

Autistic people have autism, which affects things like communication, being with other people, or how you think and feel about things.

Autistic people often have a harder life than other people, because of:



- Being treated differently to others.



- Not getting the same good healthcare as others.

Over the past year, we have spoken to:



- Autistic people.
- Local carers.
- People who work in support services.



This has helped us write the Lewisham All-Age Autism **Strategy** 2022-2027.

A **strategy** is a plan of things to do over a period of time.



You can read it here:
[LINK](#)



We want to know what you think of our plan.



Please answer the questions below to tell us what you think.

About you

Question 1: Are you...



An autistic person who has been told by a doctor that they have autism



An autistic person who has not been told by a doctor that they have autism



Someone who looks after or cares for an autistic person



Someone who works with autistic people for your job

Questions for autistic people and their carers



If you said that you are autistic, or care for someone who is autistic, please answer these questions.



Question 2: Do you agree or disagree with these sentences?

- I am accepted by local people for who I am.

Agree a lot

Agree

Neither

Disagree

Disagree a lot





- I can get an **autism assessment** when I need it.

An **autism assessment** is when a doctor who know a lot about autism decides if someone has autism or not.

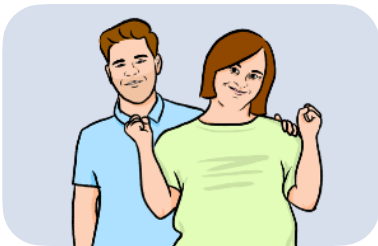
Agree a lot

Agree

Neither

Disagree

Disagree a lot



- I get support while I am waiting for an autism assessment.

Agree a lot

Agree

Neither

Disagree

Disagree a lot



- My carer or carers get the help they need to care for me and themselves.

Agree a lot

Agree

Neither

Disagree

Disagree a lot





● I can use and enjoy local spaces.

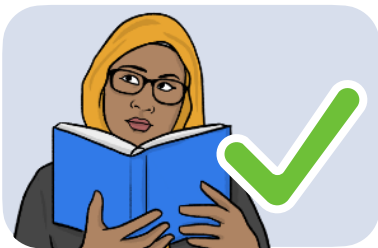
Agree a lot

Agree

Neither

Disagree

Disagree a lot



● I am able to learn in ways that work for me.

Agree a lot

Agree

Neither

Disagree

Disagree a lot



● I am able to take part in training that helps me to get a job.

Agree a lot

Agree

Neither

Disagree

Disagree a lot





● I am able to use my skills in a job I am proud of.

Agree a lot

Agree

Neither

Disagree

Disagree a lot



● I am always listened to.

Agree a lot

Agree

Neither

Disagree

Disagree a lot



Question 3: Should we change these sentences to include something else autistic people should expect in Lewisham?

Our priorities



Priorities are the most important things that should be done first.

We have 7 priorities:

1. Understanding more about autism



Question 4: What do people working in services need to understand better?
Please choose 3 options.

How to make spaces better for autistic people

How autistic people act and what that means

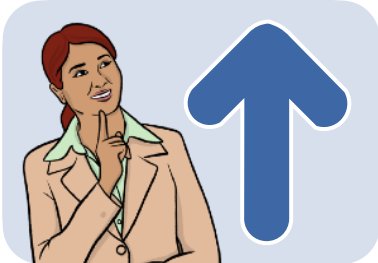
How to work in a job with autistic people

How to talk better with autistic people

How to support carers of autistic people

How to get better at getting to know autistic people

Do you have any other ideas?



Question 5: Please tell us more about how we might help people understand more about autism.

2. Support for carers



Question 6: What would most support the friends and family of autistic people? *Please choose 3 options.*

- Support from groups of other carers
- Help with using services
- Learning more about how to be a carer
- Short breaks
- Longer breaks
- Advice
- Support with getting and keeping a job
- Support with housing



Question 7: Please tell us more about how we might support carers of autistic people.

3. Improve leisure spaces



Leisure spaces are places where people go to enjoy themselves, like swimming pools and parks.



Question 8: What would help you better enjoy local spaces?

- If they were less crowded
- If they were less noisy
- If they were more closed off, with walls and a roof

- If I could go somewhere quiet for a bit
- Being able to **stim** openly. **Stimming** is an unusual body movement or noise
- More information about what is expected in a space
- Having people to go to activities with
- Having easy ways to get there
- Other

If you chose 'Other', please tell us:



Question 9: What kind of activity would you most want to take part in?
Please choose all that apply.

- Meeting people in pubs and bars
- Going out to restaurants
- Shopping
- Exercise and sport
- Going to the cinema or theatre
- Arts and crafts, like sewing, painting or dancing
- Groups and clubs, like book clubs
- Activities, like board games and computer games
- Other

If you chose 'Other', please tell us:



Question 10: Please tell us any other ideas on how we might improve local spaces for autistic people.

4. Improve autism assessments



Question 11: What support would you like there to be for people waiting to find out if they have autism?

Please choose all that apply.

- Support from other people like you
- Support groups
- Talking to a therapist

- Talking to a therapist with your family
- Support in schools and colleges
- Having someone to speak up for you
- Advice
- Other

If you chose 'Other', please tell us:



Question 12: What would you need the most support with while waiting to find out if you had autism?
Please choose all that apply.

- Getting to know people
- Living independently
- Staying in school, college or training
- Working in a job
- Housing
- Getting an assessment and finding out if you have autism
- Mental health issues
- Support to get benefits
- Support to use services
- Other

If you chose 'Other', please tell us:



Question 13: What would you need the most support with after finding out you had autism?

- Getting to know people
- Living independently
- Staying in school, college or training
- Working in a job
- Housing
- Getting an assessment and finding out if you have autism
- Mental health issues
- Support to get benefits
- Support to use services
- Other

If you chose 'Other', please tell us:

5. Support in schools

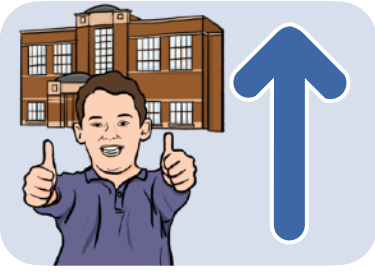


Question 14: What support in schools would you like there to be for autistic children and their families?

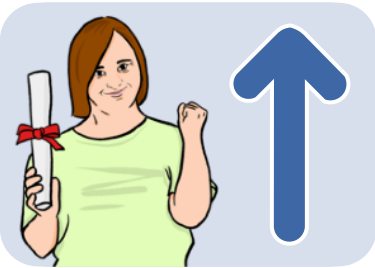
Please choose all that apply.

- Support with learning
- Support with their behaviour
- Support with getting on with others
- Support groups with other autistic children and families
- Talking to a therapist
- Talking to a therapist with their family
- Having someone to speak up for them
- Advice
- Other

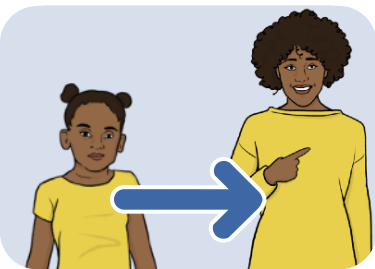
If you chose 'Other', please tell us:



Question 15: Please tell us any other ideas you have on how to improve school for autistic children.



Question 16: Please tell us any ideas you have on how to improve college or university for autistic people.



Question 17: Please tell us any ideas you have on how to make it easier for autistic children to get ready to be an adult.

6. Better training



Question 18: What would support you, or the person you care for, to get a job?

- Support with writing a CV. This is a document that explains what jobs you have had, and what you did at school
- Support with job interviews
- Advice on how to tell people that you, or the person you care for, are autistic
- Talking to a therapist
- Other

If you chose 'Other', please tell us:



Question 19: What would support you, or the person you care for, to keep a job?

- Having someone to speak up for you
- The people you work with understanding autism better
- Help with the law
- Working at times that suit you
- Being able to work from home
- Computers or equipment that help you
- Other

If you chose 'Other', please tell us:



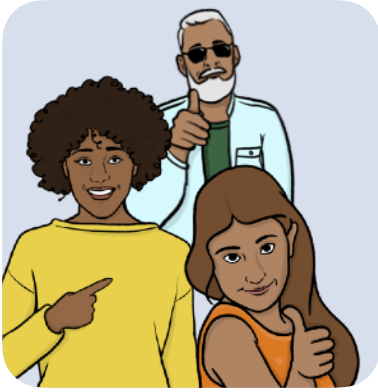
Please tell us any other ideas you might have on how we can support autistic people to find jobs.

A large, empty, rounded rectangular box with a thin grey border, intended for writing responses to the first question.



Please tell us any other ideas you might have on how we can support autistic people to keep jobs.

A large, empty, rounded rectangular box with a thin grey border, intended for writing responses to the second question.



7. Treating everyone the same

Question 22: Please tell us any ideas you have on how we can treat all autistic people the same.

More about you



These questions will help us make sure we are being fair to everyone.



You do not have to answer them.



We will not share information about who you are.



Question 24: Can we use your personal information to help us make decisions?

Yes

No

Question 25: How old are you?



Under 18

18 to 24

25 to 29

30 to 34

35 to 39

40 to 44

45 to 49

50 to 54

55 to 59

60 to 64

65 to 69

70 to 74

75 to 79

80 to 84

85 or older

Prefer not to say



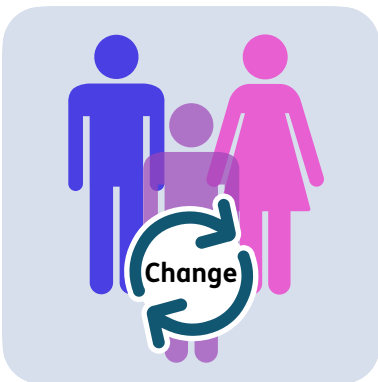
Question 26: Are you...

Male

Female

Prefer not to say

Other - please say below



Question 27: Are you the same gender now to the one you were given when you were born?

Yes

No

Prefer not to say

Question 28: Are you...



White

British

Irish

Gypsy or Irish Traveller

Other



Mixed

White and Black Caribbean

White and Black African

White and Asian

Other



Asian

British

Indian



Pakistani

Bangladeshi

Chinese

Other



Black

British

African

Caribbean

Other

Prefer not to say

Other - Please say below



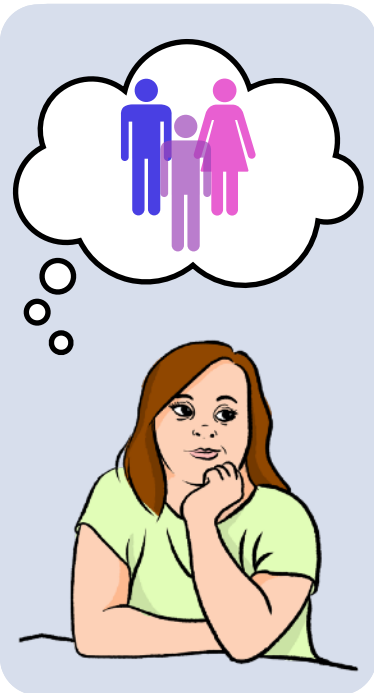
Question 29: Are you pregnant or have you had a baby in the last 6 months?

I am pregnant

I have been pregnant in the last 6 months

None of these

Prefer not to say



Question 30: Are you...

Heterosexual or straight - you are attracted to the opposite sex

Gay or lesbian - you are attracted to people who are the same sex as you

Bisexual - you are attracted to both men and women

Prefer not to say

You prefer to use your own word - please say

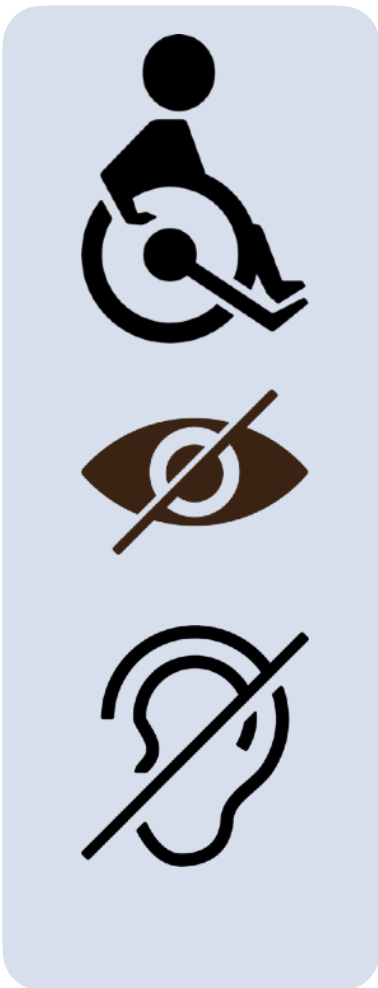


Question 31: Do you have a long term illness or are you disabled?

Yes

No

Prefer not to say



If you answered yes - which of these is your illness or disability?

Problems with moving about

Blind, Deaf or difficulty with eyesight or hearing

Mental Health issue

Learning disability

Long term illness or health condition

Prefer not to say

Other - please say



Do you have any **access requirements**?

Access requirements are things that you need to have the same chances as everyone else.



Easy Read

Sign language interpreter

Having a carer with you

Step-free access - this means not having to use stairs.

Accessible toilets

Wheelchair access

Prefer not to say

Other - please say below

Question 32: What is your religion or faith?



None

Buddhist

Christian

Hindu

Jewish

Muslim

Sikh

Prefer not to say

Other - please say below



Question 33: Do you care for someone without being paid for it?

Yes

No

Prefer not to say



If you answered yes, how many hours of care a week do you give them?

0 to 5 hours

6 to 10 hours

11 to 15 hours

16 to 20 hours

21 hours or more

Prefer not to say



Do you get any support for the unpaid care that you give?

Carers Allowance - this is money from the government to support carers



Direct Payments - this is money given to you by the council to pay for your own support

Other - please say below



Question 34: What type of housing do you live in?

I own my own home, with a **mortgage**

A **mortgage** is money that you borrow from a bank to help you buy a home.

I own my own home, without a mortgage

I rent my home from a landlord

I rent my home through a housing association

I live with family for free

I live with friends for free

I am only living here for a short time

I live in a care home

I do not live anywhere at the moment

Prefer not to say



Question 36: Where do you get money from?

Student loans and grants - this is money from the government to support university students

Family

Part time job

Full time job

Disability benefits - this is money from the government to support disabled people

- Job Seeker's Allowance - this is money from the government to support people who don't have a job
- Housing Benefit - this is money from the government to help pay for housing
- Universal Credit - this is money from the government to support people
- Pension from the government
- Pension from a job
- Savings
- Other - please say below



Hello

Question 37: Is English your first language?

Yes

No

Prefer not to say



Do you use sign language as your first language?

Yes, British Sign Language (BSL)

Yes, Deafblind Manual

Yes, but neither BSL or Deafblind Manual

No

Prefer not to say